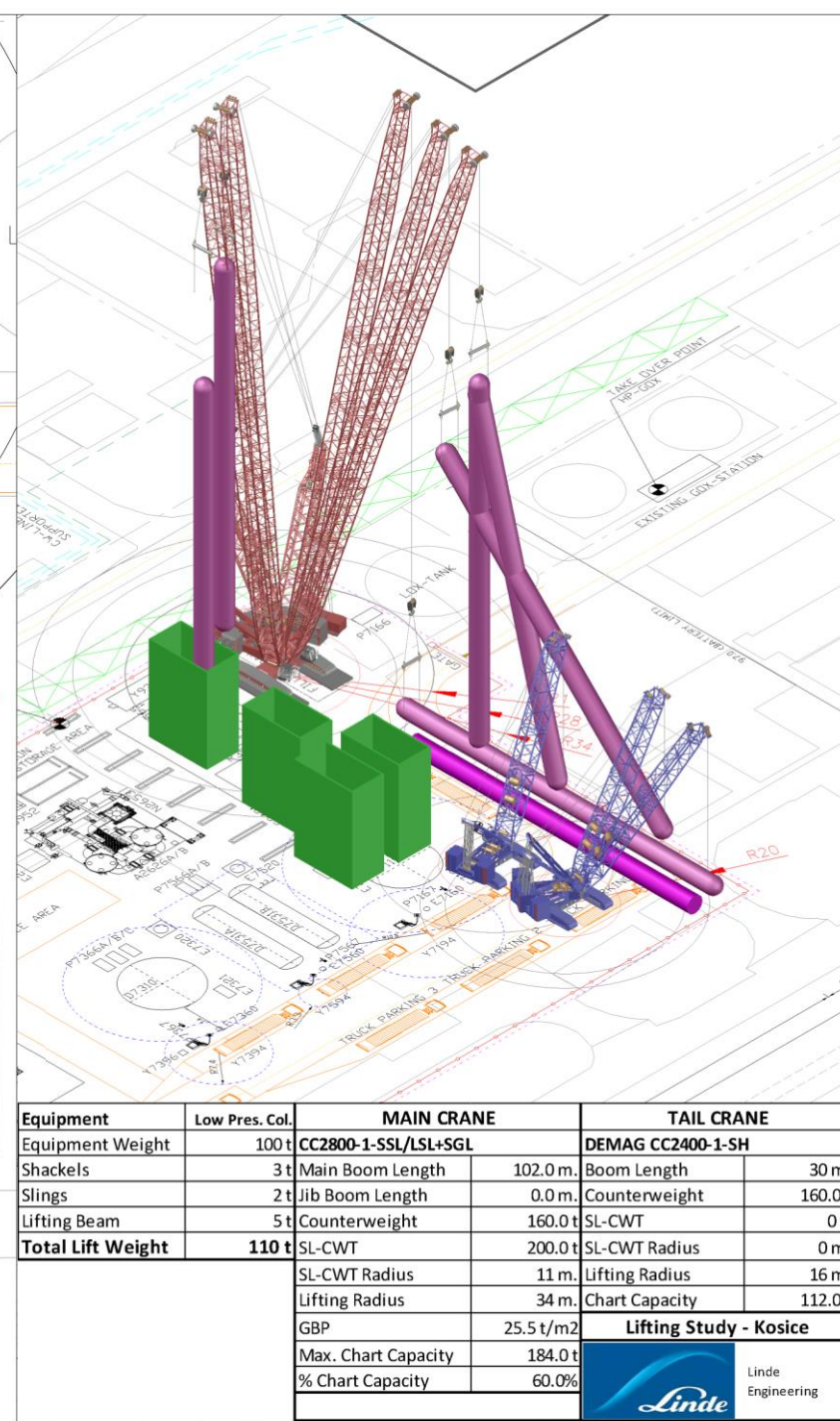
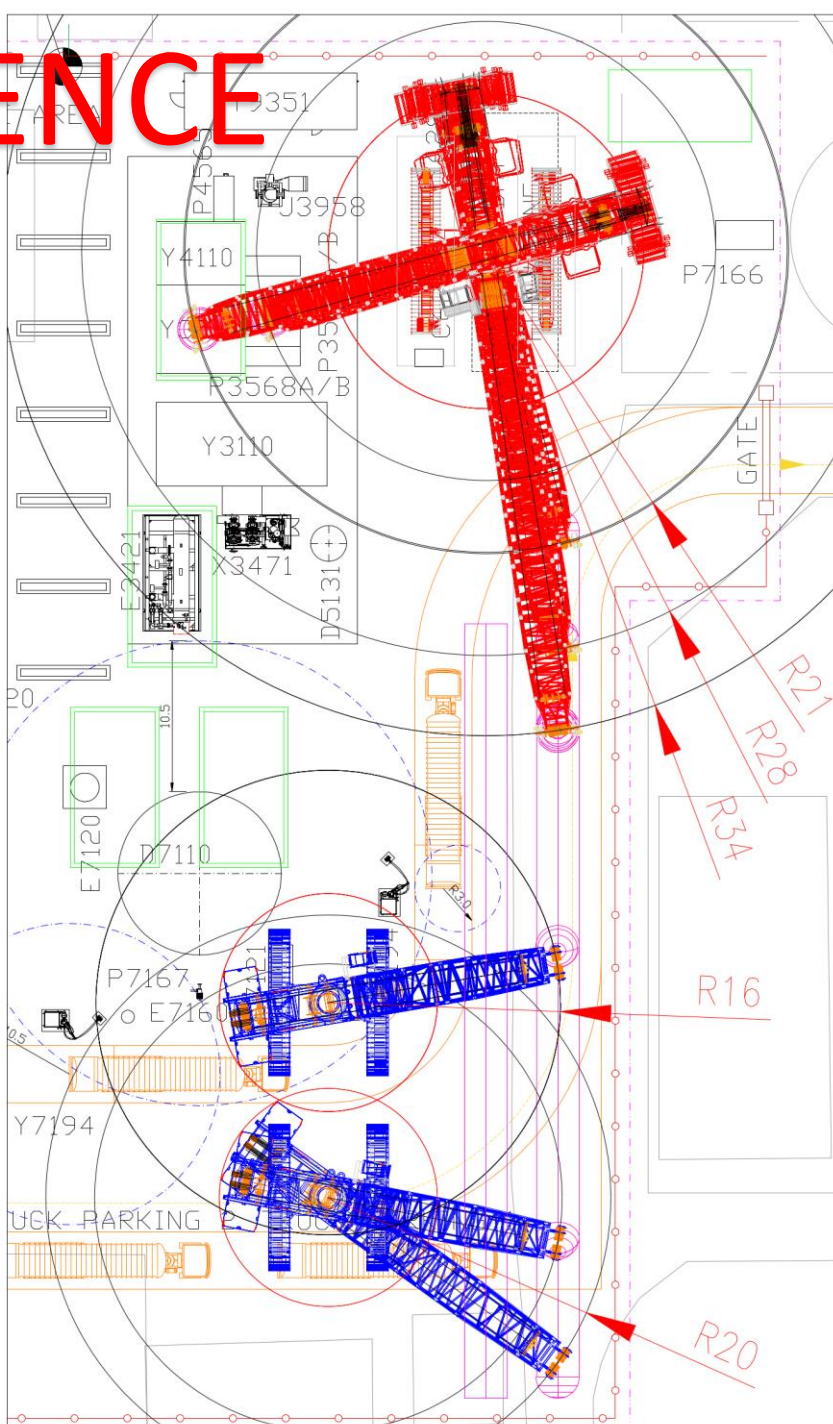



# REFERENCE



Equipment	Low Pres. Col.	MAIN CRANE		TAIL CRANE	
Equipment Weight	100 t	CC2800-1-SSL/LSL+SGL		DEMAG CC2400-1-SH	
Shackles	3 t	Main Boom Length	102.0 m	Boom Length	30 m.
Slings	2 t	Jib Boom Length	0.0 m.	Counterweight	160.0 t
Lifting Beam	5 t	Counterweight	160.0 t	SL-CWT	0 t.
Total Lift Weight	110 t	SL-CWT	200.0 t	SL-CWT Radius	0 m.
		SL-CWT Radius	11 m.	Lifting Radius	16 m.
		Lifting Radius	34 m.	Chart Capacity	112.0 t
		GBP	25.5 t/m2	Lifting Study - Kosice	
		Max. Chart Capacity	184.0 t		
		% Chart Capacity	60.0%		

# REFERENCE

